

DRYTAC[®]



JETMOUNTER[™]

ROLLER LAMINATORS

JETMOUNTER™

JetMounter™ Roller Laminators

The design of JetMounter™ roller laminators is the culmination of three decades of experience in the mounting and laminating business. Equipped with the performance features our customers demand, JetMounter™ roller laminators are unmatched for value.



JetMounter™ JM63Pro

Heated top roller laminator gives maximum flexibility.

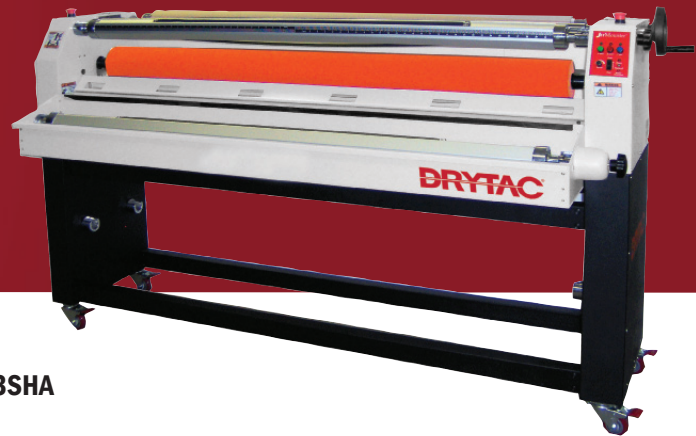
The JM63 is a versatile wide-format roller laminator with roll to roll capability at a price you didn't think was possible. The addition of the heated top roller allows it to be used with Heatset™ and single-sided thermal overlaminates as well as pressure sensitive laminates and adhesives.

Features:

- Top silicone roller has an adjustable temperature range from room temperature to 120° Celsius (248°F)
- Effective laminating width of 1600mm (63")
- Auto and foot pedal operation mode
- Speed control 0 - 3.65m (12 ft) per minute
- Maximum 5.08cm (2") nip opening
- Nip pressure indicator
- Fold away front table
- Heavy duty lockable casters
- Two top mounted emergency stops
- "Hold flat" paper in-feed guide
- Large 14cm (5.5") diameter non-stick silicone rollers
- Self-checking photo cells for finger protection
- Top and bottom auto-grip supply shafts with brake tension control
- Top and bottom wind-up with shafts adjustable speed.
- Single mechanical height/pressure adjustment (No compressor needed)
- Extra rear windup shaft for rewinding roll to roll

JM63 SPECIFICATIONS

Max Laminating Width	63"
Max Nip Opening	5.08 cm (2")
Uncrated Weight	440 kg (970 lbs.)
Width	210.8 cm (83")
Depth	73.7 cm (29") w/o table up 81.3 cm (32") w/ table up
Height	124.4 cm (49")
Roller Diameter	13.97cm (5.5")
Speed Range	0 - 4 m/minute (0-13 ft/minute)
Power (U.S. and Canada)	220V 50/60Hz, 13A Single Phase
Power Consumption	2700 Watts



JM63SHA



JM54SHA & JM44SHA

(Front mounted media unwind tray on JM54SHA only)

JetMounter™ JM63SHA, JM54SHA & JM44SHA

In addition to the standard features offered by all JetMounter™ electric models, including variable speed electric drive, silicone rollers, all-steel construction, forward and reverse, foot pedal and photo-electric safety stop, the JM63SHA, the JM54SHA and the JM44SHA offer these additional features:

- Single height adjuster to set even pressure more easily
- LCD pressure gauge display allows greater control over the process
- Front-mounted media unwind tray with supply shaft can be used for feeding media, mounting adhesive or kraft paper (JM63SHA and JM54SHA only)
- Heavy duty metal stand with locking castors (comes standard with all three models)

JM44SHA, JM54SHA & JM63SHA SPECIFICATIONS

	JM63SHA	JM54SHA	JM44SHA
Max Laminating Width	162 cm (63.75")	134.4 cm (54.50")	113 cm (44.5")
Max Nip Opening	2.5 cm (1")	2.5 cm (1")	2.5 cm (1")
Uncrated Weight	170 kg (375lbs)	150 kg (331lbs)	110 kg (243lbs)
Width	211 cm (83")	179.1 cm (70.5")	153.9 cm (61")
Depth	48 cm (19")	48 cm (19")	48 cm (19")
Height (without stand)	48 cm (19")	48 cm (19")	48 cm (19")
Height (with stand)	123.7 cm (48.7")	123.7 cm (48.7")	123.7 cm (48.7")
Roller Diameter	127mm (5")	12.7 cm (5")	10.2 cm (4")
Speed Range	0.6-3 mpm (2-10 fpm)	0.6-3 mpm (2-10 fpm)	0.6-3 mpm (2-10 fpm)
Front Media Unwind Tray	Yes	Yes	N/A
Power	220V 50/60Hz, Single Phase	220V 50/60Hz, Single Phase	115 VAC or 230 VAC 50/60Hz

JetMounter™ JM18, JM26 & JM34

The JM18, JM26 and JM34 are motorized table top laminators operated by a foot switch, leaving both hands free to handle the work being processed. These models are designed for mounting and laminating inkjet outputs, but are equally capable of handling photographic or any printed media. All models include a supply shaft and photo cells for finger protection.

Note: There are no rewind shafts on these models.

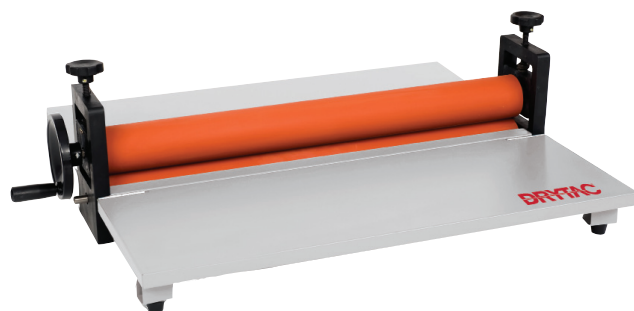


JM18, JM26 & JM34 SPECIFICATIONS			
	JM34	JM26	JM18
Max Laminating Width	86.9 cm (34.25")	66.7 cm (26.25")	46.4 cm (18.25")
Max Board Thickness	1.9 cm (.75")	1.9 cm (.75")	1.9 cm (.75")
Unpacked Weight	32 kg (70.5 lbs)	24 kg (53 lbs)	23kg (51lbs)
Width	105 cm (41.33")	84.5 cm (33.25")	64.8 cm (25.5")
Depth	30 cm (11.8")	31 cm (12.2")	29.9 cm (11.75")
Height	34 cm (13.38")	31 cm (12.2")	33 cm (13")
Speed Range	0.76-.5.5 mpm (2.5-18 fpm)	0.76-.5.5 mpm (2.5-18 fpm)	0.76-.5.5 mpm (2.5-18 fpm)
Power	115 VAC or 230 VAC 50/60 Hz	115 VAC or 230 VAC 50/60 Hz	115 VAC or 230 VAC 50/60 Hz

ML25

This table-top manual laminator is an inexpensive option for small photo studios or copy shops that want a quick solution to mount or laminate small pieces. Simple, durable construction makes this model easy to use. It also folds up for easy storage and transport.

ML25 SPECIFICATIONS	
Max Laminating Width	64.8 cm (25.5")
Max Nip Opening	1 cm (.375")
Weight	14 kg (32 lbs.)
Width	69.5 cm (27.375")
Depth	62.2 cm (24.5")
Height	26 cm (10.25")
Roller Diameter	6.3 cm (2.5 in.)



Tel +44 (0)117 958 6500/0845 070 0660
 Email bristol@drytac.com
 Web www.drytac.com